



TID #4

CONTACT:

Casey Langenfeld 920-898-5766, x 105
Administrator caseyl@cnhwi.org

The City of New Holstein currently has shovel ready lots available in Tax Increment District (TID) #4. TID #4 is located East/West off of Hwy 57.

Various sized lots are available with options to size to your building needs.

Lots are zoned Commercial and Light Industrial. (see backside of this document)

Through the TID's the City can offer options to assist with development.

These options vary by the amount of assessed value that your project will bring to this District.

Contact Casey for more details.





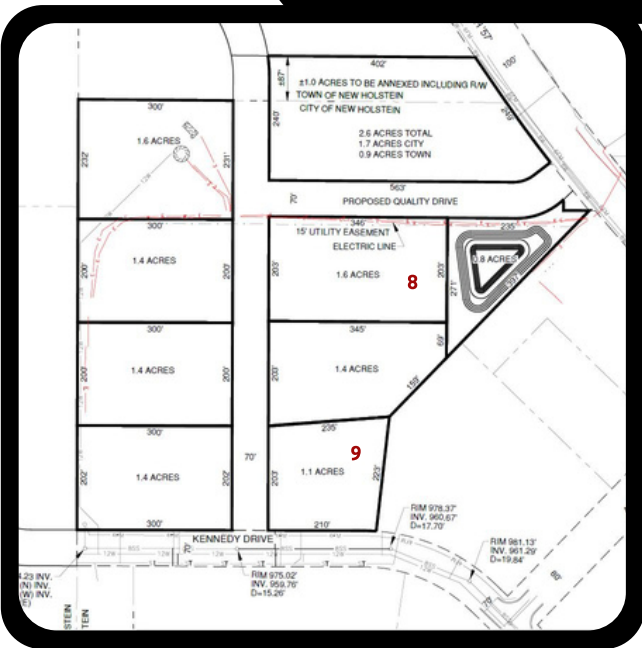
Kennedy Drive

- 1- Zoned Light Industrial 3.25 Acres**
- 2- Zoned Light Industrial 2.94 Acres**
- 3 - R-3 Multi-Family 4 Acres**



Altona Avenue/Wilson Street

- 4- Zoned Light Industrial .867 Acres**
- 5- Zoned Light Industrial .876 Acres**
- 6 - Zoned Light Industrial .88 Acres**
- 7 - Zoned Light Industrial .916 Acres**



These parcels are being developed and could be available Mid to Late 2021.

Kennedy Drive/Quality Drive

- These lots will provide community retention ponds.**
- 8- Zoned Light Industrial 1.6 Acres**
- 9- Zoned Light Industrial 1.1 Acres**